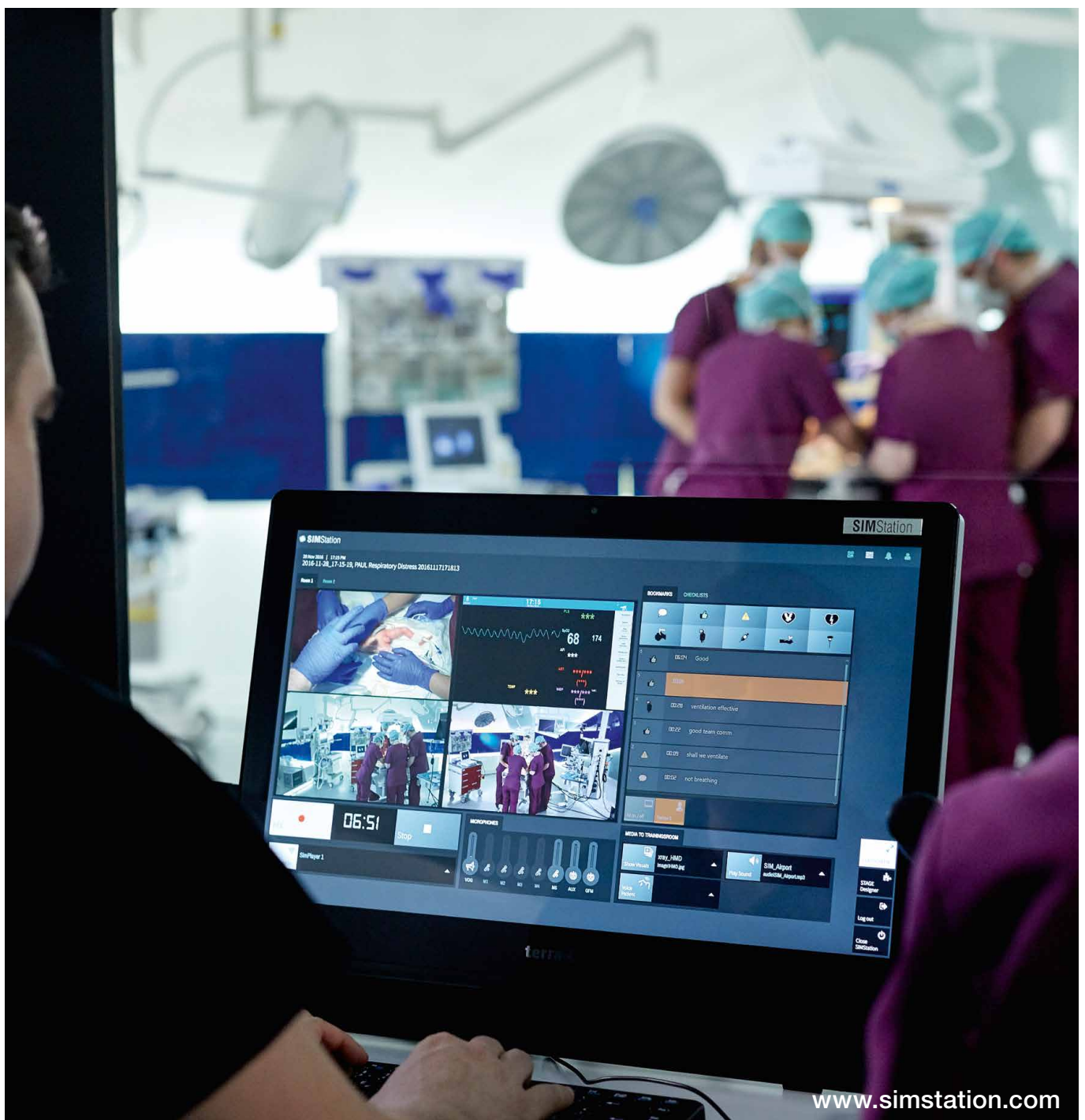


SIMStation Pro

A pre-engineered, transportable high-end system
Easy to set up, easy to operate



Your simulation center now fits in a small car

Recording Box
35.0kg/77.2 lbs
w/h/d 55/50/40cm
21.6"/19.7"/15.7"



Accessories Box
30.4kg/67.0 lbs
w/h/d 55/50/40cm
21.6"/19.7"/15.7"



Monitor Box
17.5kg/38.6 lbs
w/h/d 55/17/70cm
21.6"/6.7"/27.5"



Voice Box
10.5kg/23.1 lbs
w/h/d 55/40/20cm
21.6"/15.7"/7.9"



Debriefing Box
17.2kg/37.9 lbs
w/h/d 55/20/60cm
21.6"/7.9"/23.6"



Top mobility alongside top quality.

We designed our system with the assistance of renowned simulation trainers from Europe and the U.S.. When choosing each individual component, we ensured that it was lightweight and could be stored in a way which saved space. All components have been clearly arranged in individual lightweight aluminium flight cases.

Lightweight and space-saving.

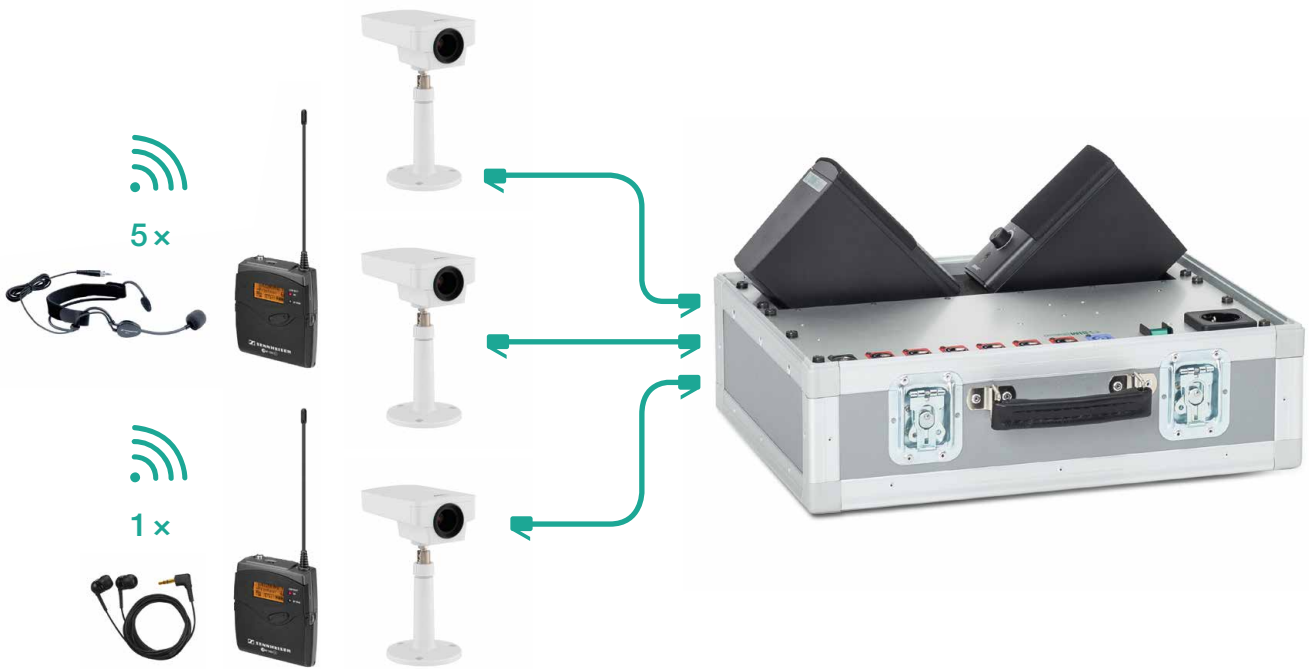
Each case can be lifted by one person, problem-free and with only medium effort. All the equipment fits inside a standard-sized car, and can be quickly installed at each training place.

Flexible and upgradeable at any time!

The basic equipment of the SIMStation Pro system can be subsequently upgraded with additional SIMStation components at any point. In this way it is possible to upgrade the components for several training rooms (with up to 20 cameras), several debriefing rooms, as well as several control rooms, and so, from a mobile, flexible basic system, outfit a fully-fledged, multifunctional simulation centre step by step.

Plug 'n' Simulate

Training Room



SIMStation Pro is the most advanced high-end solution for video-supported in situ simulation.

SIMStation Pro facilitates high-end simulations and debriefings of a quality previously only achievable in complex, stationary simulation centres.

Easy to set up!

The SIMStation Pro system is pre-engineered and already configured with all necessary hardware and software upon delivery. We have designed the system so that even people without specific technical know-how are able to assemble and operate it. Assembly of the system is very straightforward: one merely needs to connect each component and room to a single network cable. The entire assembly time takes between 15 and 45 minutes, depending on location and circumstances.

Easy to operate!

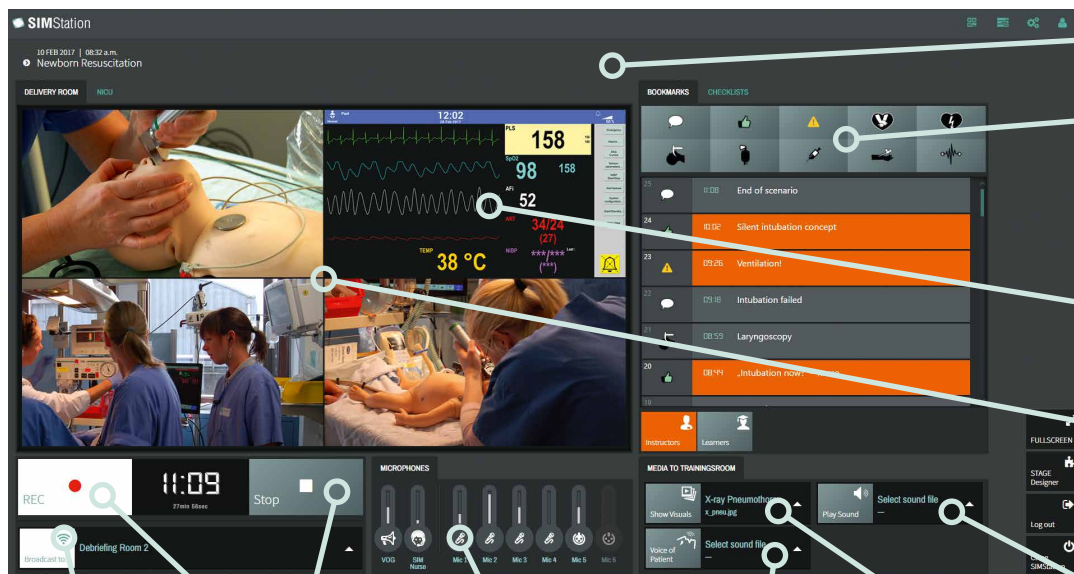
SIMStation offers uniquely intuitive and easy-to-operate software, the design of which has been developed by leading simulation experts. During recording you operate the SIMStation Pro Control & Recording Software intuitively via touchscreen and label important events which you wish to bring up later during debriefing. For debriefing you then use the SIMStation Tablet, which as a “personal assistant” offers the trainer unique operational comfort in controlling the debriefing and thus increases its efficiency.

The basic equipment contains all the components and functions necessary for the mobile assembly of a training room, control room and debriefing room:

- 3 HD-quality cameras
- 5 wireless microphones plus optional ambient microphone
- Patient monitor capturing
- Voice of God, Voice to Trainer
- Full HD recording in 1080p, labelling of important scenes and checklists
- “Debriefing deluxe” with mobile HD projector and SIMStation Tablet
- Live transmission of scenario in debriefing room

SIMStation Pro allows simulation experts to realize ...

Control Room



User-friendly touch screen interface

Insert markers and annotations using a pre-configured set of icons, specially designed for events related to human factors or medical skills

View and capture any patient monitor signal

Toggle quad split-screen or single screen HD view

Toggle live video and live audio in debriefing room

Start and stop scenario recording

Control and record up to eight audio channels

Play sounds or speak live to the wireless "Voice of Patient" loudspeaker.

Show images, such as x-rays, on a screen in the training room

Play sound files, e.g. street noise, in the training room

... training and debriefing of the highest quality

Debriefing Room



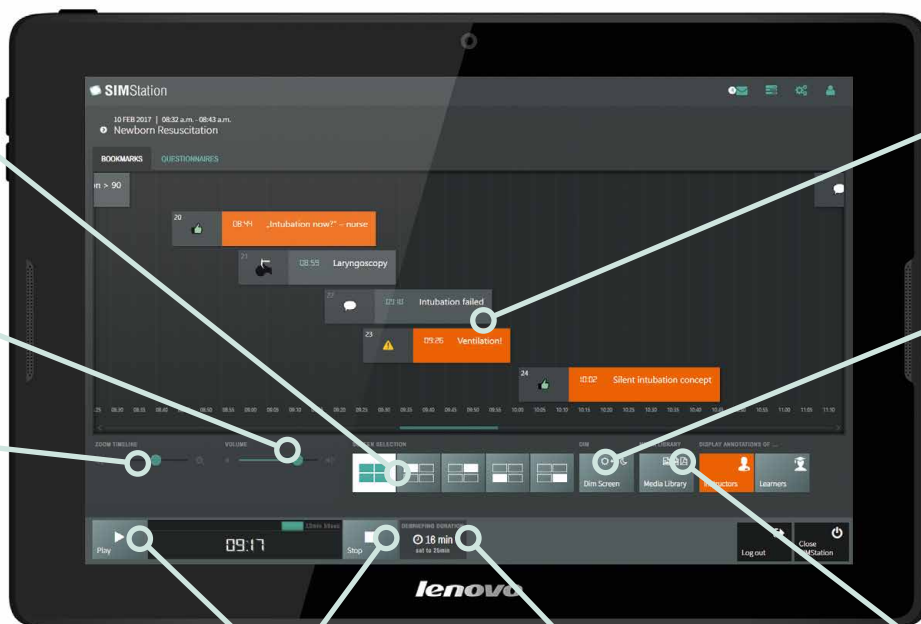
Toggle quad
split screen
and single
full screen
video view

Volume
control

Zoom
timeline

Directly jump
to scenes in
the marker list

Dim screen



Play back
the recorded
scenarios

Control elapsed
debriefing time
with a timer

Seamlessly insert
presentations or
instructional videos
during video debriefing

SIMStation References

Worldwide Projects

Since 2013 we have implemented numerous SIMStation systems worldwide, mainly in Europe, the U.S. and also Middle East, from the individual in situ facility right up to major simulation centres. Amongst others, large U.S. hospital systems and renowned medical universities in London, Paris, Munich and Vienna rank among our customers. In addition, we are constantly expanding our network with product partners and distributors. Check out the corresponding pages at our website.

SIMStation is distributed worldwide,

either directly from our headquarters in Vienna (for Northern and Western Europe), or through another distributor and partner, including those in the U.S. and Middle East. In order to be continually learning and discovering the demands for further developments of our systems, our employees attend in situ training all over Europe and take part in national and international simulation events.

Fields of Application



In-situ, Clinics



Preclinical



Simulation Centres



Public Safety Organisations

Contact

Live presentation or trial? We'll come to you!



Joachim Hilbrand, CEO
Director of Software Division
mail: j.hilbrand@simstation.com



Christian Müller, CEO
Director of Hardware Division
mail: ch.mueller@simstation.com



Georg Pridun
Sales Director
mail: g.pridun@simstation.com